

Multilayer Chip Suppressions /Bead Array - MA3216 SERIES

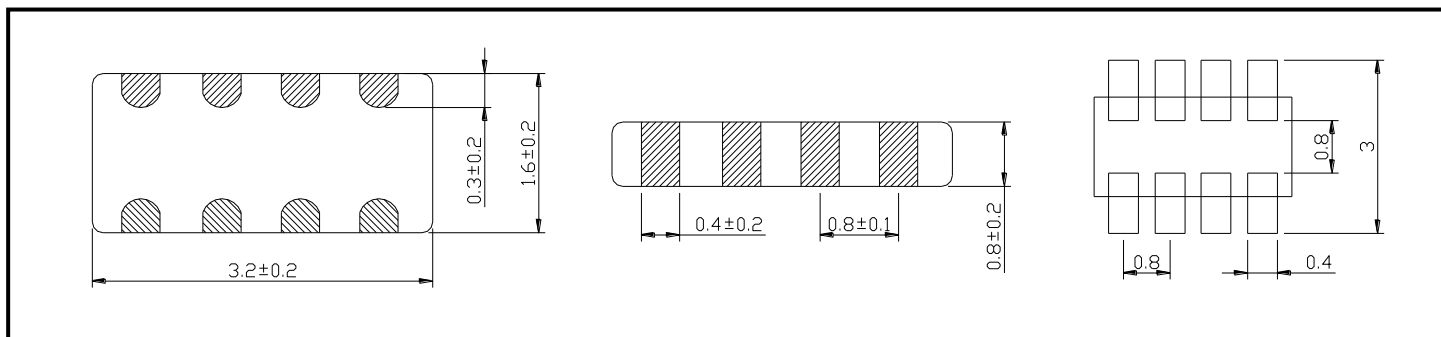


PART NUMBERING SYSTEM

MA	3216	—	221	—	LF
TYPE	DIMENSIONS		IMPEDANCE		LEAD FREE

SHAPES AND DIMENSIONS

UNIT : mm



SPECIFICATION TABLE

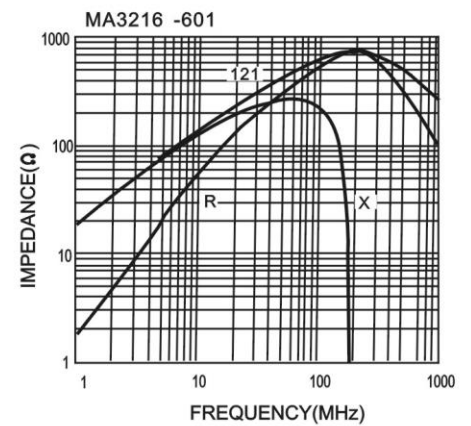
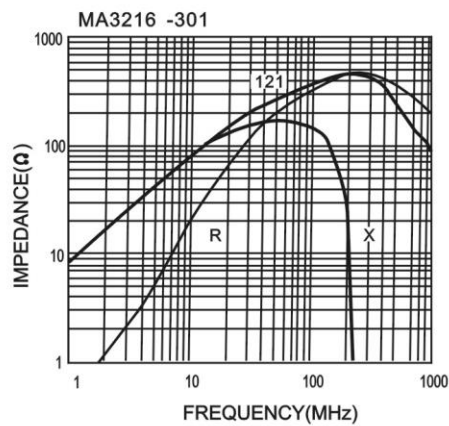
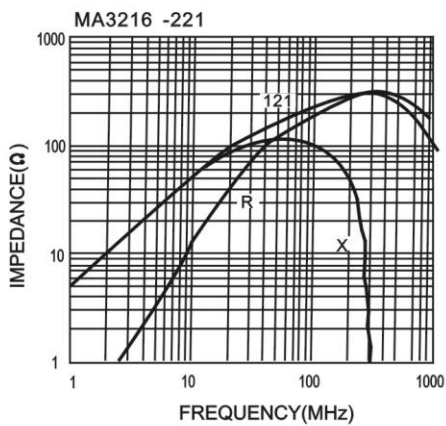
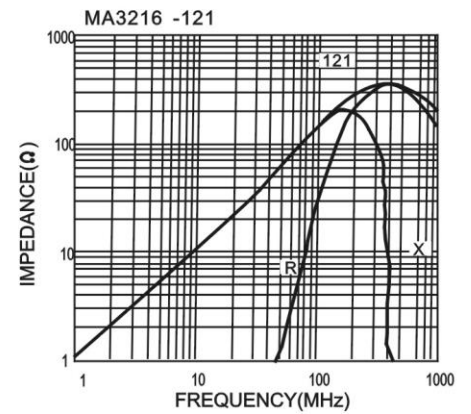
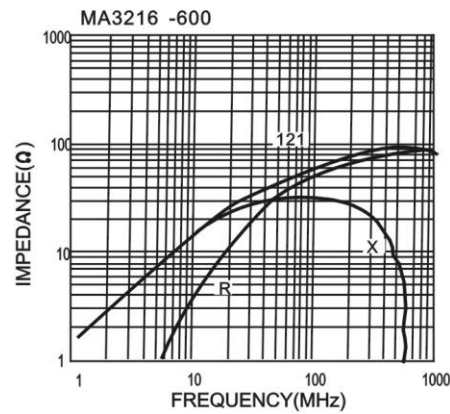
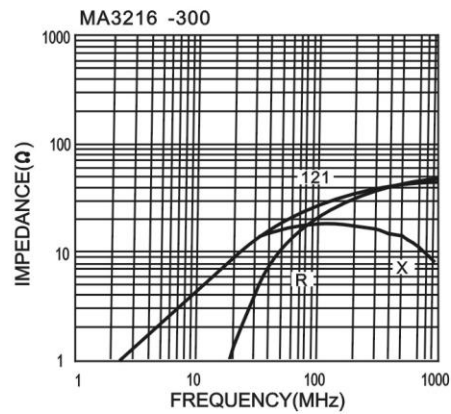
PART NUMBER	IMPEDANCE (Ω) at 100MHz	DCR (Ω) (Max.)	IDC (mA) (Max.)
MA3216-300-LF	30±25%	0.20	500
MA3216-600-LF	60±25%	0.25	200
MA3216-121-LF	120±25%	0.80	150
MA3216HT-121-LF	120±25%	0.30	350
MA3216-221-LF	220±25%	0.45	200
MA3216HT-221-LF	220±25%	0.35	400
MA3216-301-LF	300±25%	0.40	150
MA3216HT-301-LF	300±25%	0.40	250
MA3216-471-LF	470±25%	0.55	100
MA3216-601-LF	600±25%	0.50	200
MA3216HT-601-LF	600±25%	0.35	200
MA3216-102-LF	1000±25%	0.70	50
MA3216HT-102-LF	1000±25%	0.75	150

- Test equipment : Agilent/HP-4291A impedance analyzer or equipment .
- Operating temperature range -55°C to +125°C .
- Electrical specifications at 25°C.



Multilayer Chip Suppressions /Bead Array - MA3216 SERIES

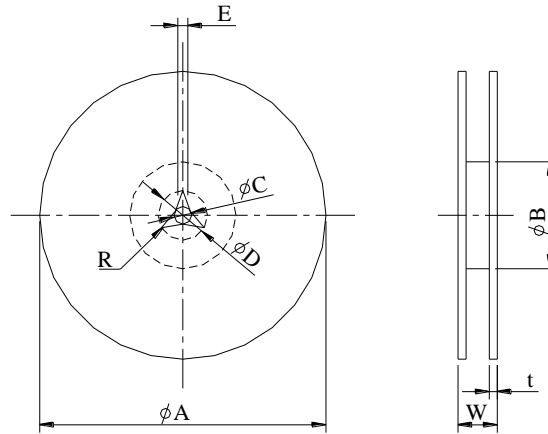
IMPEDANCE VS FREQUENCY CURVE



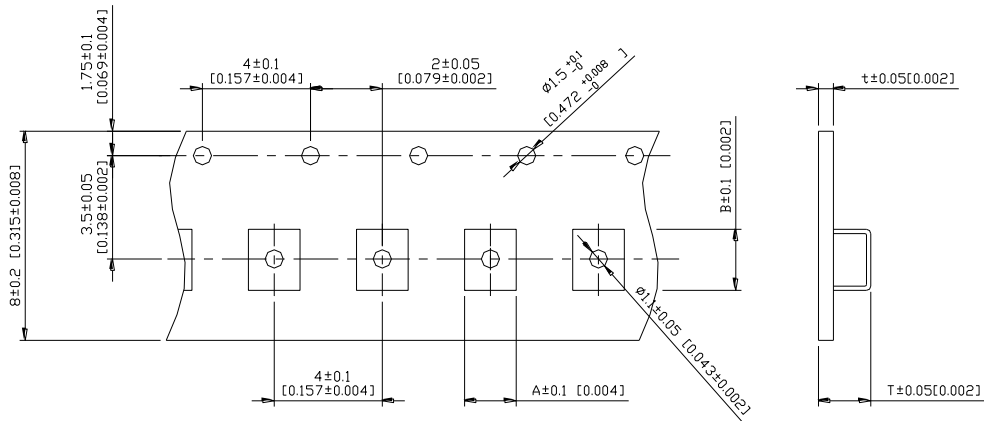


Multilayer Chip Suppressions /Bead Array - MA3216 SERIES

PACKAGING SPECIFICATION



	A	B	C	D	E	W8	W12	t	R
T(ψ178mm) Reel	ψ178±2	ψ60±1	ψ13±0.8	ψ21±0.8	2	10±1.5	14.5±1.5	1.27±0.2	1



TYPE	A	B	T	t	T(φ 178mm)	T(φ 330mm)
MA3216	1.90	3.50	1.40	0.2	3000 pcs/reel	-